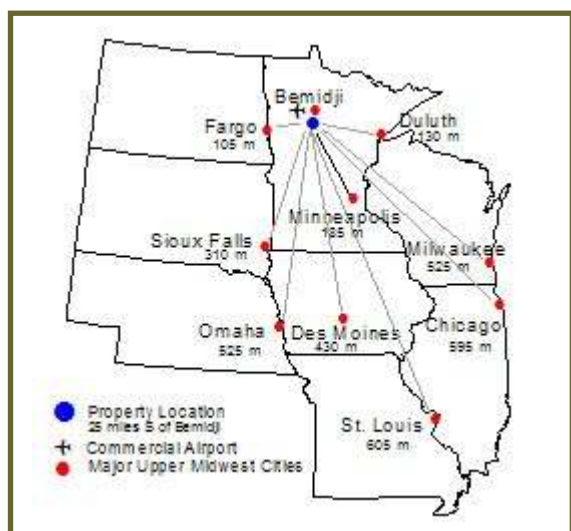


# Laden Lake Rod & Gun Club

## Looking for Members

Laden Lake Rod & Gun, the Potlatch lessee for a 2,560 acre property located near Park Rapids, MN, is **looking for 4 new members in 2010**. The property is conveniently located, yet also remote and private. It can be found 25 miles south of Bemidji, MN, and is adjacent to paved Hubbard County roads. Bemidji also offers daily commercial air service from/to the Minneapolis International airport making it easily accessible from Upper Midwest major cities.



**Hunting Opportunities:** White-tailed deer, ruffed grouse and black bear, as well as woodcock and puddle ducks are found on this land. The property's forests have been managed for a diverse age class distribution of primarily aspen, and also contains birch, open fields, wetlands, brushlands, open water and a small amount of jack and red pine. There is one 20 acre pond, three approximately 10 acre ponds, and six smaller ponds. Food plots have been installed for a number of years.

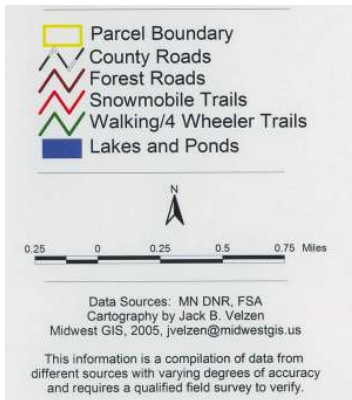
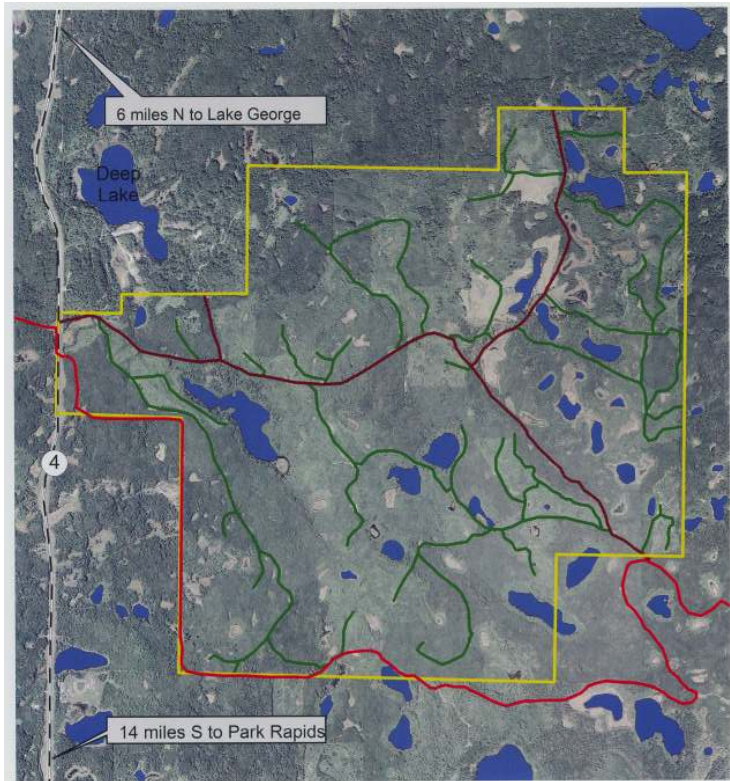
This property also provides an excellent opportunity to manage the local deer herd with balanced adult sex ratios and age structures. The Club is looking for members willing to participate in the ongoing deer management program that includes implementing harvest restrictions such as protecting younger bucks and harvesting an adequate number of female

deer. Prospective members should also be willing to maintain harvest and observation records to assess management progress and to fine-tune future management options.

**Other Recreational Opportunities:** In addition to hiking, 4-wheeler and snowmobile trails within the property itself, a maintained and groomed snowmobile trail also borders the property on the west and south. It, in turn, provides ready access to an additional trail system encompassing hundreds of miles of snowmobile and other trails.

Superb fishing and waterfowl opportunities including Leech Lake and Lake Winnie, as well as numerous others, are within easy driving distance.





### **Property Description**

- ❑ 2,560 contiguous acres
- ❑ Water Features
  - One 20 acre pond; three approximately 10 acre ponds; six 5-7 acre ponds
  - Numerous small open water wetlands
- ❑ Fields/Food Plot Opportunities
  - 16 acre and 45 acre field near northern border and along road
  - 2 acre field between a 5 and 10 acre pond; 6 acre field on SW border
- ❑ Habitat Features
  - Two-thirds of property is in 5- 20 year old aspen; remaining habitat includes birch, open fields, open water, wetlands, brushlands and a small amount of jack and red pine.
- ❑ Trails
  - Hunter walking trails/hiking trails are interspersed throughout

### **Membership Information:**

The Laden Lake Rod & Gun Club has 16 members and would like to add 4 more. Cost is \$1,500 per year. For more details, contact Tim Young (Laden Lake Rod & Gun Club) at 218-252-2009.